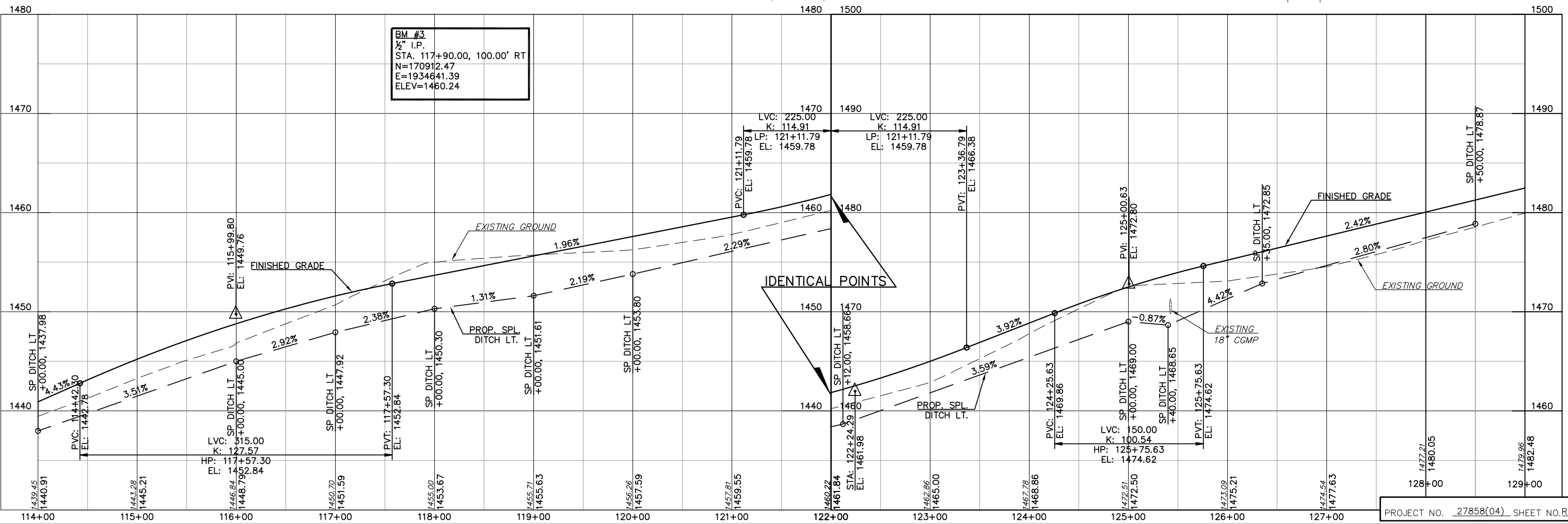
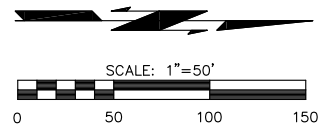
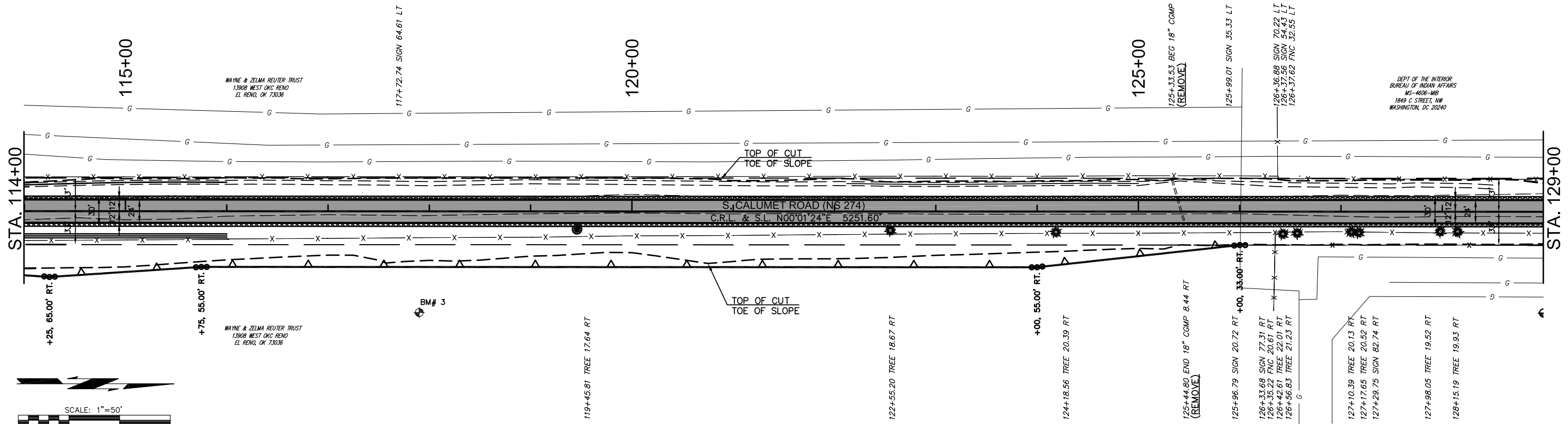


SEC. 35, T12N, R9W

SEC. 36, T12N, R9W



BM #3
 1/2" I.P.
 STA. 117+90.00, 100.00' RT
 N=170912.47
 E=1934641.39
 ELEV=1460.24

PLOTED: Tuesday, September 05, 2017 @ 03:24PM
 N:\1454-Columet Rd-Crossroads County\Drawings\145499.dwg